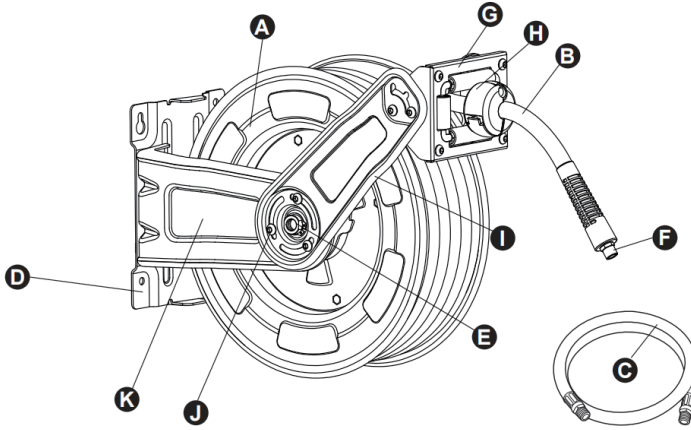


SOFAREEL20 ***20m Open Frame*** ***Auto Hose Reel***

Instruction Manual

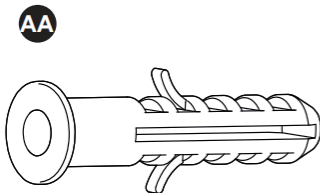
Please read this instruction manual carefully before use.

PACKAGE CONTENTS

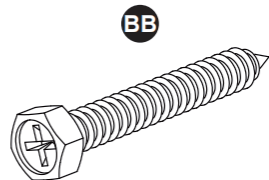


PART	DESCRIPTION	QUANTITY
A	Retractable Hose Reel	1
B	Air Hose (20 m)	1
C	Lead Hose (2 m)	1
D	Bottom Base Plate	1
E	Air Inlet	1
F	Air Outlet	1
G	Hose Guide	1
H	Stop Ball	1
I	Roller Bracket	2
J	Screw	6
K	Reel Bracket	2

HARDWARE CONTENTS



plastic anchor Qty.4



ST6.3 x 45 mm Lag Bolt Qty. 4

SAFETY INFORMATION



Please read and understand this entire manual before attempting to assemble, operate or install the product.

⚠ WARNING

- Improper assembling or operation of this product could result in serious injury or property damage. Read and understand all assembly and operation instructions.
- Never remove side cover while hose is under tension. Serious injury could occur.
- Do not exceed maximum pressure of 300 PSI. Use compressed air regulated to a maximum pressure at or below the rated pressure of any attachments to this product.
- Protect your eyes by wearing safety glasses or a face shield when mounting and using this product.
- Keep loose clothing, hair and jewellery away from moving parts of hose reel.
- Make sure that the product is firmly mounted before pressurizing.
- Rapidly retracting hose could cause injury and property damage. Maintain control of hose as it retracts.
- Keep hose away from sharp edges. Check hose for wear before each use.

PREPARATION

Before assembling the product, make sure all parts are present. Compare parts with package contents list and hardware contents list. If any part is missing or damaged do not attempt to assemble the product.

Estimated Assembly Time: 10-15 minutes.

Tools Required for assembly and installation (not included):

- 3/8"(10 mm) Wrench
- Phillips Screwdriver
- 3/16" (5 mm) Allen Wrench
- Sealant Tape
- Drill & 3/8" Drill Bit
- Pencil
- Level

ASSEMBLY INSTRUCTIONS

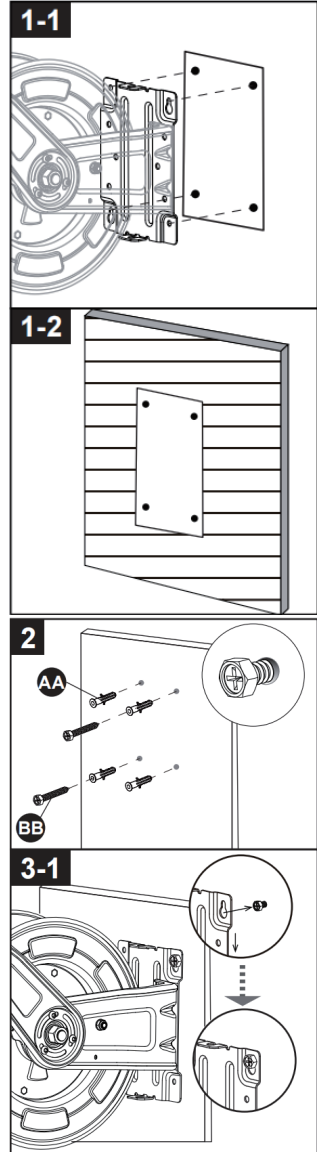
1. Make a paper template from the Bottom base plate (D) of the hose Reel. Mark the center of bolt holes in the desired mounting location by putting the paper template against the wall.

NOTE When securing the hose reel assembly to plywood or alternative wood substrates make sure it is thick enough to not only support the hose reel, but the force required to extend and retract the air hose.

NOTE Ensure there are no live electrical wires or plumbing in the wall at the location you are drilling.

2. Drill 4 holes which can accommodate 3/8" bolts (not included), and install 4 plastic anchors into the holes. Then drive 2 mounting screws into the holes (lower left and upper right), leaving about 5mm (1/4in) between the wall and screw head.

3. Hang the hose reel on these 2 preassembled screws, and slid down, let the screw snap into the small end of holes on the Bottom base plate (D) to lock reel in place. Tighten these two pre assembled screws and drive the other two screws.

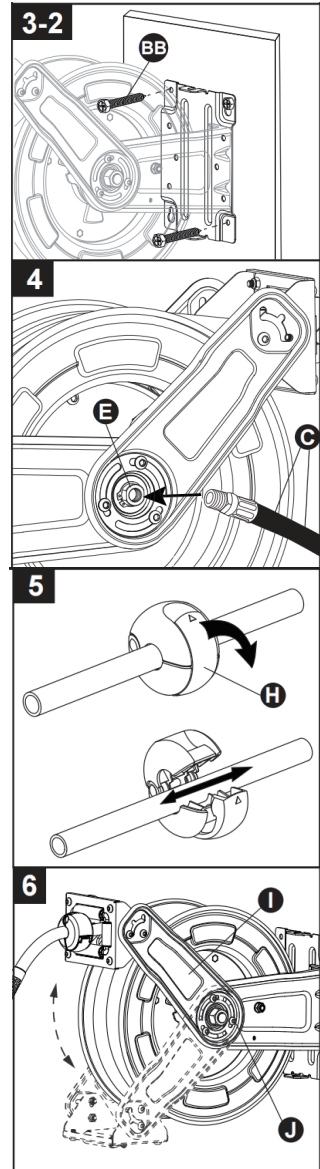


4. Wrap 3-5 layers of sealant tape on both male plug ends on the leader hose (C), attach one end into the air inlet (E) using a 3/8" (10mm) wrench to tighten together.

5. Pull out the hose to the desired length, ensure the hose reel is locked (will not rewind), open the latch on the stop ball (H) and move it to the desired location. Re-latch the stop ball (H).

6. The roller bracket (I) can be adjusted to the best angle/position for the smoothest operation of hose reel (A) when the hose reel is mounted. Loosen three screws (J) on each side with 5/16 (5mm) allen Wrech, rotate the roller bracket (I) to the desired position, then re-tight the three screws (J) on each side tightly.

NOTE If the desired angle is bigger than 90 degree, Take off 3 screws (J) on each side, and rotate the roller bracket to the desire position, then re-assemble the 3 screws back and tight them.



OPERATING INSTRUCTIONS

1. To extend air hose (B), slowly pull air hose to desired length. The hose reel will make a "clicking" sound as the hose is pulled out. The clicking sound you hear is the drum locking into place so it will not retract when you let go of the air hose. It may be necessary to pull air hose beyond desired length to keep it from automatically retracting.
2. To retract, slowly pull air hose (B) until clicking stops. While holding the air hose, let the hose automatically draw back until the stop ball(H) stops against the hose guide (G).

NOTE To avoid damaging the hose reel (A), always hold on the air hose (B) while it is rewinding.

CARE AND MAINTENANCE

- Always operate the product with care by following the operating instructions.

ASSEMBLY INSTRUCTIONS

PROBLEM	POSSIBLE CAUSE	CORRECTIVE ACTION
Air hose cannot be pulled smoothly or blocks.	1. Roller bracket is not adjusted in the best angle/position. 2. Roller bracket is damaged.	1. Adjust roller bracket in the best angle/position. 2. Replace roller bracket.
Air hose will not retract smoothly.	1. Roller bracket is not adjusted in the best angle/position. 2. Roller bracket is damaged.	1. Adjust roller bracket in the best angle/position. 2. Replace roller bracket.
Air hose will not retract all the way.	1. Not enough tension on the coil spring.	Pull out approximately six ft of hose, and lock hose in place Remove the Stop Ball (H) from the Hose and Slide the hose out of Hose Guide (G) so the hose is hanging loose. A.To increase tension, wrap the loose hose one time around the reel drum. B.To decrease tension, unwrap the hose one time from the drum. - Run the hose back through the Hose Guide (G) and re-attach the hose stopper. - Pull the hose out several feet to check the tension.



SGS Engineering (UK) Ltd
Unit 1 West Side Park
Raynesway
Derby, DE21 7AZ

EC Declaration of Conformity

This is an important document and should be retained

MANUFACTURER'S NAME: SGS Engineering (UK) Ltd

TYPE OF EQUIPMENT: Auto Hose Reel

PART NUMBER: SOFAREEL20

APPLICATION OF EC COUNCIL DIRECTIVES / STANDARD:

Machinery Directive : 2006/42/EC

I, the undersigned, hereby declare that the equipment specified above conforms to the above European Communities Directive(s) and Standard(s).

PLACE: Derby, UK

DATE: 01 May 2025

A handwritten signature in black ink, appearing to read 'Neil Sansom', written over a white rectangular background.

(Signature)

Neil Sansom
CEO





SGS-ENGINEERING.COM